

Lapwai School District Superintendent's Weekly Update



Friday, November 20, 2020

*Celebrations & Pictures of Wildcat Scholars
& the Dedicated Staff Who Serve Them*

Mrs. Beckman's Third Grade Wildcat Scholars!



The 3rd Grade Mathematicians in
Mrs. Beckman's Class Are
Studying Arrays

Nez Perce Education Standard:
Experiential Learning

Computer Applications with Mr. Peterson

Sophomores Building Computers



Nez Perce Education Standard:
Experiential Learning

Nez Perce Education Standard:
Personal Sovereignty



Lapwai
Middle-High
School

Native American Heritage Month

HELP US BUILD THIS GINGERBREAD HOUSE!



AVAILABLE TIMES:

3-5 P.M.

DECEMBER 8-11

*AT LAPWAI
COMMUNITY
LIBRARY*

103 N. MAIN ST.



WE THANK THESE
SPONSORS:



AGES 10+ PLEASE



PRE-REGISTRATION IS
REQUIRED DUE TO SOCIAL
DISTANCING GUIDELINES.



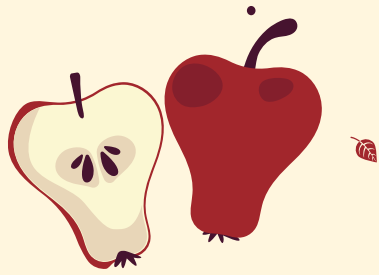
208-843-7254



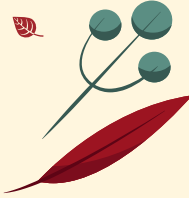
LAPWAI.LIBRARY@PRLD.ORG

Prairie River
Library District
**PR
LD**
Prairie River

RSVP



Attendance Matters



Although remote learning is included in our approach to health and safety, regular and punctual attendance remain central to student success. Attending to remote learning is equally as important as in-person instruction. Logging in at scheduled times, engaging in the work, and submitting assignments regularly will be required and recorded as school attendance. Failure to maintain these expectations will count as school absences.



Grades PreK-8: Students who miss 40% or more of the scheduled instructional minutes of the school year will be automatically retained and required to repeat their current grade. The parent or guardian may appeal this retention with the Lapwai School District Attendance Committee.

Grades 9-12: Absences will be recorded by period. When a student misses twelve (12) days in any given period in a semester, the student will be withdrawn and lose credit for each class with 12 or more absences. The parent or guardian may appeal the loss of credit with the Lapwai School District Attendance Committee.



Annual Impact Aid Survey

In an effort to hear the voices of our parents, community members and Nez Perce Tribal leaders in the planning and development of our educational programs and activities, the following survey was created. The survey is available in two formats:

Lapwai.org
Impact Aid

PRINTABLE SURVEY



Contributing
Editors

CARLEEN BALDWIN



Lapwai School District
Superintendent's
Faculty Cabinet

SAMANTHA CHANDLER



Lapwai School District
Superintendent's
Faculty Cabinet

MELISSA BECKMAN



Lapwai School District
Superintendent's
Faculty Cabinet

IRIS CHIMBURAS



Lapwai School District
Superintendent's
Faculty Cabinet

Qe'ciyew'yew'
Faculty
Cabinet

Contributing Editors



Qe'ciyew'yew'
Faculty
Cabinet