



*Lapwai School District  
Superintendent's  
Weekly Update*

*Friday, April 16, 2021*

CELEBRATIONS & PICTURES OF WILDCAT SCHOLARS  
& THE DEDICATED STAFF WHO SERVE THEM



## *Qe'ciyew'yew'* *Jenny Williams*

Mrs. Williams joined Mrs. Raml's talented art students to demonstrate the proper way to harvest dogbane. Qe'ciyew'yew' to both of these dedicated educators!



Nez Perce Standard  
Experiential Learning



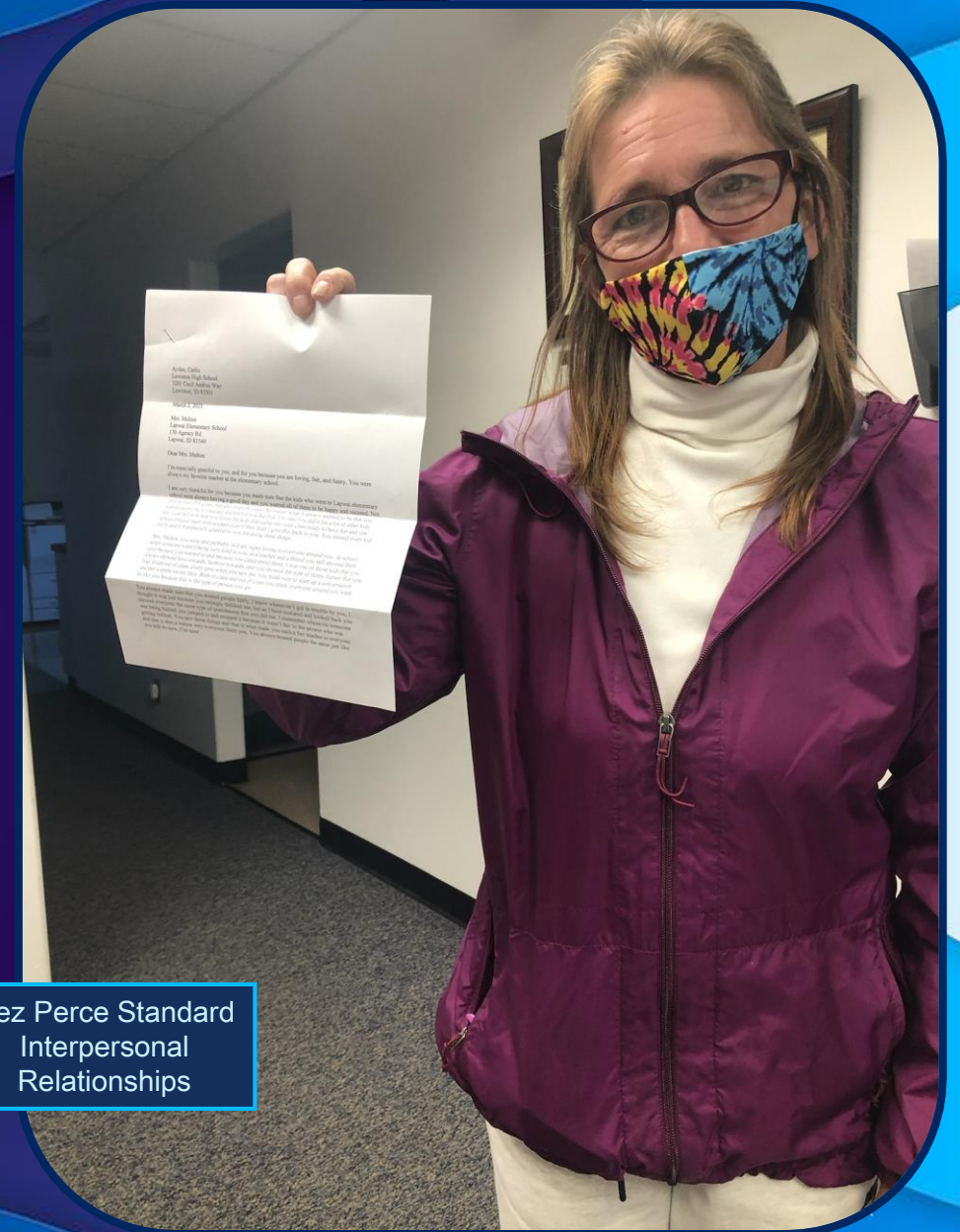


# Mrs. Melton

Mrs. Melton teaches physical education at Lapwai Elementary School. She received a letter from a former student thanking her for always making him feel special.

Students may forget what you have taught them, yet they will always remember how you made them feel.

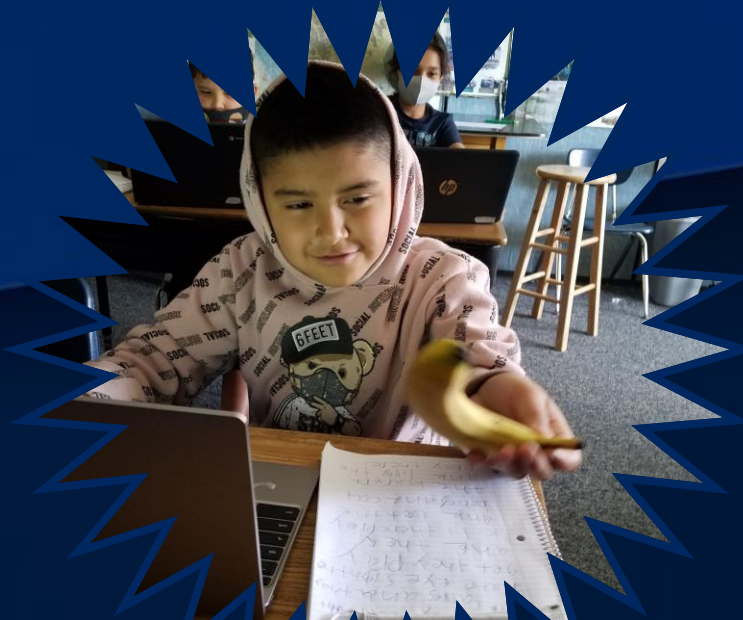
Qe'ciyew'yew' Mrs. Melton for your big heart for Lapwai students!



Nez Perce Standard  
Interpersonal  
Relationships

# *Fresh Fruits & Vegetables Program*

In addition to free breakfast and lunch, preschool through 6<sup>th</sup> grade receive a fruit or vegetable snack every day.  
Qe'ciyew'yew' Lapwai School District Food Service!





## *Parent Input Opportunity: [www.Lapwai.org](http://www.Lapwai.org)*

The Lapwai School District has created the following parent survey for the evaluation of district faculty. Your opinion matters to us.

The following performance input tool will be forwarded to the appropriate supervisor of the individual upon whom you are commenting. The form will be shared with that individual. The input will be utilized by the supervisor in better understanding how others view their performance during the evaluation process. Please note: This survey is not intended for feedback regarding coaches. Please contact Athletic Director, William Big Man, for athletic input or concerns.

Link to Survey:

<http://www.lapwai.org/2020-2021%20Performance%20Evaluation%20Input%20Tool.pdf>



# *Lapwai School District Featured in Idaho Ed News: [www.IDEDNews.org](http://www.IDEDNews.org)*



## *Lapwai Addresses Mental Health by Understanding a Child's Personal Story and Culture*



The Lapwai School District was featured as one of only nine rural school districts in the state to provide four key behavioral health supports including 1) Behavioral Health Framework; 2) Strategy/Practice; 3) Structured Program; and 3) Family/Caregiver Support. The recognition includes collaboration with the Nez Perce Tribe and Nimiipuu Behavioral Health to support Lapwai students. A Wildcat thank you to Lori Ravet, Julie Clark, Iris Chimburas, and Karen Hendren for their contributions to the story.



# Teacher of the Month

PARTICIPATING SCHOOL DISTRICTS ARE ASOTIN, CLARKSTON, LAPWAI AND LEWISTON

**NOMINATE YOUR FAVORITE TEACHER BELOW!**



**ALLIANCE**  
TITLE & ESCROW CORP.  
**TEACHER**  
OF THE MONTH

★ ★ ★

[lcvalley.dailyfly.com](http://lcvalley.dailyfly.com)



# Séepn'itx!, Mistálqtx!, Hitéeme!

"ASK, LISTEN, LEARN"

PARENT/GUARDIAN RESOURCE CONFERENCE 2021

Hosted by: Lapwai Community Coalition

Sponsored by: Idaho Office of Drug Policy & Optum Idaho



## Mental Health First Aid for Youth

Presented by Myra Campbell and Thea Skalicky

Youth Mental Health First Aid teaches you how to identify, understand, and respond to signs of mental illness and substance use disorders in youth.

## QPR Training

Presented by Kiri Brown and Rebecca Lehman

QPR, or Question, Persuade, and Refer, prepares participants to identify suicidal behaviors, intervene, and refer those who are struggling to mental health resources.



## From ACEs to Better Places: Road to Resilience

Presented by Dr. David Aiken and Danielle Scott

This session goes over ACEs and Resilience and their influence on future violence, victimization/perpetration, and lifelong health outcomes.

\*Featuring Danielle Shuffield with Drug/Alcohol Trends Education Interactive Teen Bedroom

**Date: June 14 - 16, 2021**

**Time: 9:00 AM - 3:00 PM**

**Place: Clearwater River Casino  
Lewiston, ID**

No charge to attend the conference. Lunch and snacks will be provided. Day camp will be available for youth grades K-5 at the Lapwai City Library. Transportation to and from conference available if needed. To register or for questions, please contact DelRae Kipp via email at: [delraek@nezperce.org](mailto:delraek@nezperce.org)



SPONSORED BY: Lapwai Community Coalition · IODP · Optum Idaho · Students for Success · CCI · Nimiipuu Health · Lapwai School District · U of I Extension Nez Perce Tribe · Nez Perce Tribe Social Services · Lapwai City Library

