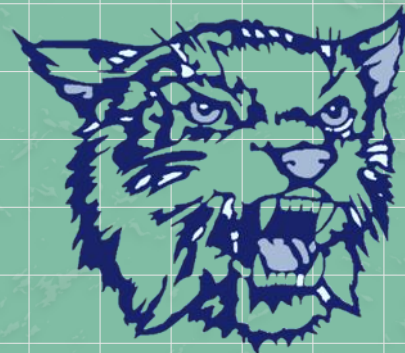



LAPWAI School District Superintendent's Weekly Update



Friday, February 11, 2022

*Celebrations & Pictures of Wildcat Scholars
& the Dedicated Staff Who Serve Them*



Lapwai Elementary Perfect Attendance First Semester!



Stamper

McKaylee Faulkner

Arthur

Hudson Speas

Dessel Weatherwax

Paris

Peyton Smith

Hewett

Fadrea Morrison

Hillman

Jomille Littlefish

Kade Penney

Beckman

Alysha Dick

Serenity Rodgers

Woodford

Matteson Lange

Elena Nunez

Baldwin

Nathen Ellenwood

McKarcher

Reese George

Kylee Yallup

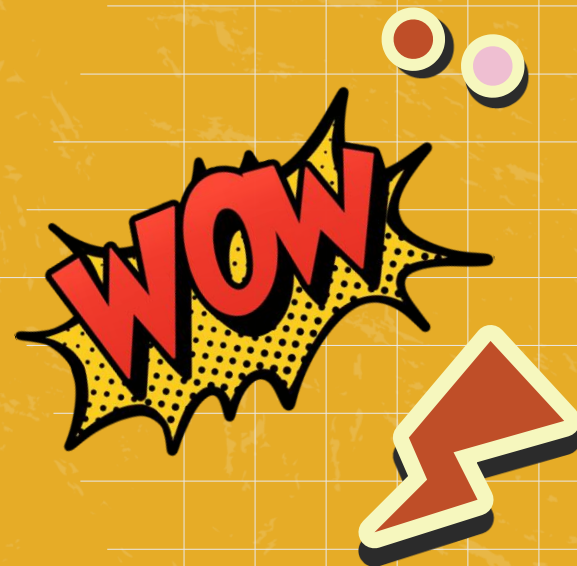


On behalf of the Lapwai School District Board of Trustees, we would like to congratulate these students for achieving perfect attendance the entire first semester of the 2021-2022 school year!

Lapwai Middle-High Perfect Attendance First Semester!



Left to Right: Keyon Henry (7th), Rashawn Henry (6th),
Davi Jo Whitman (7th), Julia Nunez (7th)



On behalf of the Lapwai School District Board of Trustees, we would like to congratulate these students for achieving perfect attendance the entire first semester of the 2021-2022 school year!



In honor of National School Counseling Week, please join us in celebrating the growing resources within the Lapwai School District to ensure a safe and supportive learning environment.



Lori Ravet
Special Education Director
School Psychologist




Kristen Bateman
Elementary Counselor
School Psychologist



Josh Nellesen
Middle-High Academic
Guidance Counselor

**Qe'ciyew'yew'
Counselors!**



In honor of National School Counseling Week, please join us in celebrating the growing resources within the Lapwai School District to ensure a safe and supportive learning environment.




Jennifer Becker
Elementary Positive
Behavioral Interventions
& Supports Coordinator



Bonnie Franke
Middle-High Positive
Behavioral Interventions
& Supports Coordinator



Shawna Leighton
Community Resource
Specialist & Truancy
Interventionist



In honor of National School Counseling Week, please join us in celebrating the growing resources within the Lapwai School District to ensure a safe and supportive learning environment.



Iris Chimburas
Project Director
Empowerment Room
Teacher



Lori Lynn Parrish
Home School Liaison



Rhonda Taylor
Administrative
Assistant



Jenifer Williams
Guidance Service
Specialist



Jenny Williams
Cultural Specialist

**Lapwai Indian Education
Department**

In honor of National School Counseling Week, please join us in celebrating the growing resources within the Lapwai School District to ensure a safe and supportive learning environment.



Tracy Behler
Speech & Language
Therapist



Bonnita Brown
Speech & Language
Therapy Aide



Jaclyn Chavez
Occupational Therapist



Marika Renshaw
Speech & Language
Therapist

Not Pictured
Dr. Jamie Larson
Physical Therapist



Staff Spotlight

The 2021-2022 Superintendent's Faculty Cabinet would like to celebrate Jolee Bacon this week. Mrs. Bacon is a popular and frequent substitute teacher at Lapwai Middle-High School. This 1991 Lapwai High School graduate and former Wildcat mascot continues to gift school spirit to her alma mater.

Schools across the nation are experiencing substitute teacher shortages. We would like to thank Jolee and all of our caring substitutes for their support!

Dr. D'Lisa Penney, Lapwai Middle-High School Principal, had the following to share:

Jolee Bacon has had a student walk into their classroom, see her and say, "Yes, we have Mrs. Bacon as our sub!" Jolee has always been willing to be helpful and available for whatever student and school needs we've had, so you may have seen her on lunch and recess duty, helping in the front office, being a librarian, and teaching in every classroom. We appreciate her!

LAPWAI INDIAN EDUCATION DEPARTMENT

HELLO STUDENTS!

YOU ARE HALFWAY TO THE FINISH LINE!
HERE ARE A FEW THINGS TO HELP YOU
COMPLETE YOUR JOURNEY!

FEEL FREE TO USE YOUR SUPPLIES AT
SCHOOL OR TAKE THEM HOME WITH YOU
IN CASE YOU NEED LEARNING SUPPLIES
AT HOME.

WE ARE SO VERY PROUD OF YOU!

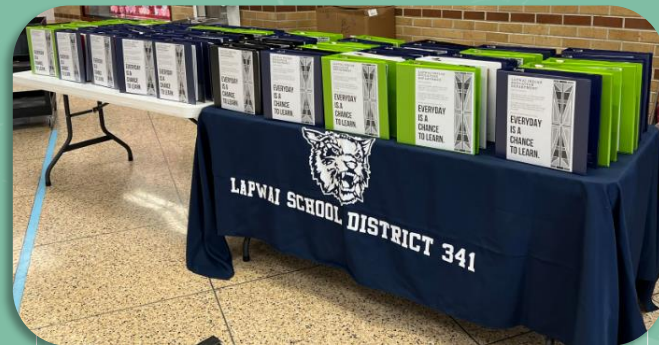
EVERYDAY IS A CHANCE TO LEARN.

The Lapwai Indian Education Department gifted elementary students with a binder full of school supplies!



Qe'ciyew'yew'

Lapwai Indian Education Department



Board of Trustees School Facilities Tour

Qe'ciyew'yew' to the Lapwai School District Board of Trustees for touring school facilities this week! Thank you for ensuring our students have safe buildings to learn and all the supplies they need in order to be successful!



A Wildcat thank you to our Principals and the Superintendent's Student Cabinet for hosting the Lapwai School District Board of Trustees, Business Manager, and Superintendent!



Board of Trustees School Facilities Tour



Mrs. Arthur - 1st Grade

Mr. Morgan - 5th Grade

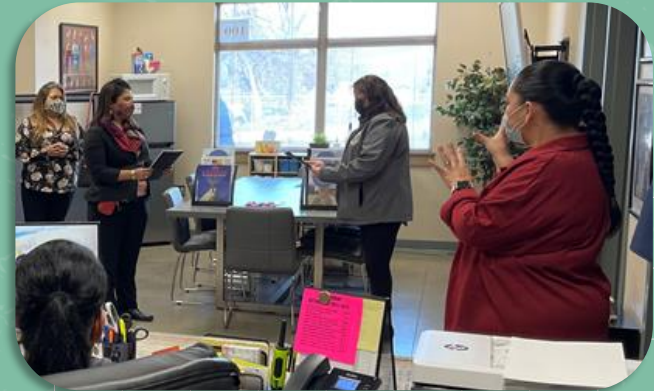


Board of Trustees School Facilities Tour



Mrs. Baldwin - 5th Grade

Lapwai Indian
Education Department

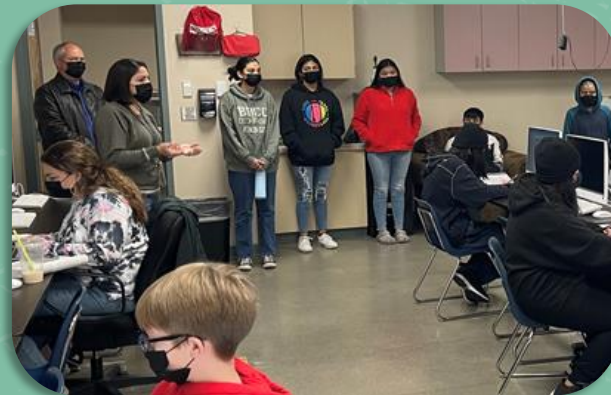


Board of Trustees School Facilities Tour



Mrs. Hays - 3rd Grade

Mrs. Parrish - Empowerment Room



Board of Trustees School Facilities Tour



Mrs. Selstad - Social Studies

Mr. Peterson - Business Education





RECEIVE 1 HIGH SCHOOL CREDIT
YOU MUST SIGN UP in room 100 BY FRIDAY, FEBRUARY 18TH

8:30-2:30 Clearwater River Casino
(Transportation included)
Students will be back by end of school day

OPEN TO ALL 9TH 10TH 11TH 12TH GRADE STUDENTS

Pre-Conference **MUSIC WITH DJ RUDY INDIGENOUS**

Habitat Wellness Training CHANCE RUSH

Lunch with **Music and Message**

Character and Reputations

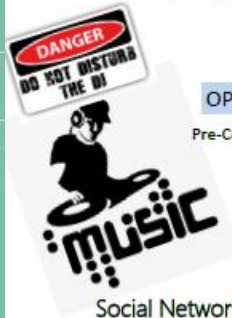
Social Media Break

Social Networking and **DIGITAL FOOTPRINTS WITH DJ RUDY INDIGENOUS**

Wrap up, Talking Circle and closing poet and Video with Abby Rush

DOOR PRIZES INCLUDE: Black Bison, Moana's, Village Center Cinemas, and
MORE!!!!!! Enter to win a chance at 5 MAJOR SECRET PRIZES!!!!!!

CONFERENCE IS CLOSED TO THE PUBLIC.



Parent Input Opportunity

The Lapwai School District has created the following parent survey for the evaluation of district faculty. Your opinion matters to us.

The following performance input tool will be forwarded to the appropriate supervisor of the individual upon whom you are commenting. The form will be shared with that individual. The input will be utilized by the supervisor in better understanding how others view their performance during the evaluation process. **Please note: This survey is not intended for feedback regarding coaches. Please contact the Lapwai Middle-High School Principal for athletic input or concerns.**

The survey and directions for submitting your input may be accessed at the link below. You are also welcome to request a copy by calling (208) 843-2622.

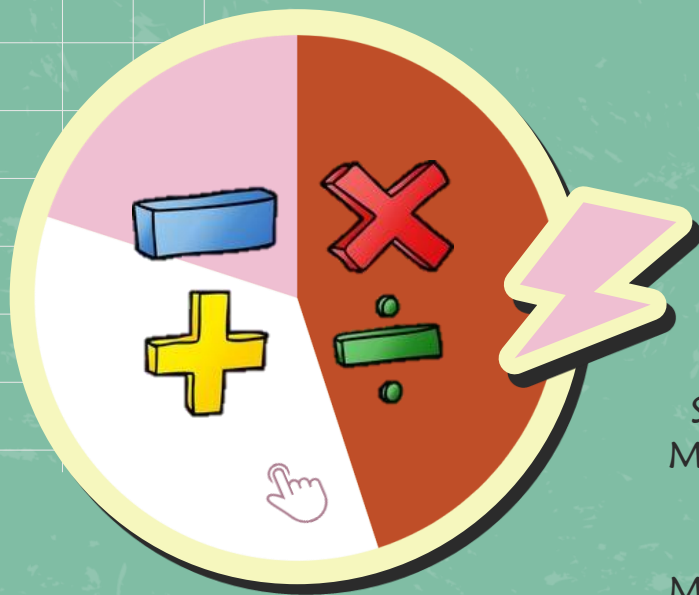
See [Parent Input Opportunity](#) at Lapwai.org

[Link to Survey](#)



Parent Resource


Math + Games for Kids, Teachers & Parents



★ MATH GAMES ★

Addition
Subtraction
Multiplication
Division
Fractions
Manipulatives
Brain Teasers
Lessons
Quizzes
Flash Cards

