

Lapwai School District
Superintendent's
Weekly Update

September 30, 2022



*Celebrations & Pictures of Wildcat Scholars
& the Dedicated Staff Who Serve Them*

Thank You for Your Continued Support of Impact Aid

A team from Lapwai joined Superintendent Aiken last week to thank Idaho's Congressmen for their continued support of Impact Aid.

Impact Aid is approximately 31% of the Lapwai School District budget. 12 Idaho districts and over 14,000 Idaho students rely on this critical federal funding. Dr. Aiken also serves as the Idaho State Chair of the National Association of Federally Impacted Schools and represents all of the federally connected students and districts in Idaho.

Impact Aid is the Federal Government's reimbursement to school districts for the presence of nontaxable federal property such as military installations, Indian lands, federal low-rent housing, national laboratories, and grasslands. The presence of nontaxable property limits the ability of school districts to generate sufficient tax revenue to support K-12 education. Nationwide this funding supports 1,200 school districts and 10 million students.

Plummer-Worley	368
Snake River	1,806
Blackfoot	3,792
Wilder	541
Mackay	241
Mountain Home	3,915
Mountain View	1,241
Kamiah	424
Lapwai	526
Marsing	853
Bruneau-Grand View	302
Chief Tahgee Elementary Academy Charter	86
Total Students	14,095

Senator Crapo



Senator Crapo Co-Chairs the
the Senate Impact Aid Coalition

Senator Risch



Senator Risch Serves on the
the Senate Impact Aid Coalition

Thank You for Your Continued Support of Impact Aid

Thank you Sonya Samuels-Allen, Board Chair, and Nathan Weeks, Business Manager, for joining the Superintendent to advocate for Impact Aid!

Representative Simpson



Representative Simpson serves on the House Impact Aid Coalition

Representative Fulcher



We Continuously Urge Representative Fulcher to Serve on the House Impact Aid Coalition

Thank You for Your Continued Support of Impact Aid

Thank you Sonya Samuels-Allen, Board Chair, and Nathan Weeks, Business Manager, for joining the Superintendent to advocate for Impact Aid!

Help Us Hold the Federal Government Accountable for Their Obligation to Lapwai Students

Our Impact Aid allocation is based on the number of children who live on trust property as well as parents who work on trust land.

During Parent-Teacher Conferences November 3rd and 4th parents will be requested to complete residency and employment surveys to ensure the highest Lapwai School District allocation for Impact Aid. Your responses hold the federal government accountable to their promise of ensuring a fully funded and equitable education for our students.

Impact Aid is not fully funded by the United States Government. Your help with verification by completing the needed forms will assist us holding them accountable to provide this funding obligation to all Lapwai students.

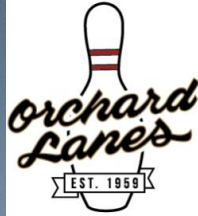
Qe'ciyew'yew!



What is Impact Aid?

While making up for the shortfalls in state education funding, we are unable to rely on supplemental levies (raising property taxes) due to the high presence of tax exempt trust property in our district. The federal government recognizes their role in this dilemma and provides revenue in lieu of property taxes through a program called Impact Aid. The purpose of Impact Aid is to provide formula grants to school districts affected by the presence of nontaxable federal land to make up for the lost revenues of property taxes. It is one of the few formula programs where districts receive funds directly from the U.S. Department of Education rather than through their states. Impact Aid was first signed into law by President Harry S. Truman in 1950 and has been amended many times since then.

The funds become part of local district's regular budget. No restrictions are placed on the use of the funds except for money earmarked for children with disabilities. Please help us identify these students by completing Impact Aid questionnaires and surveys which will be distributed during parent-teacher conferences on November 3rd and 4th. Together, we ensure all students will reach their full potential. - Qe'ciyew'yew'!



**PERFECT
ATTENDANCE
WINNER!**



**CONGRATULATIONS!
INEZ TAYLOR
KINDERGARTEN**



**PERFECT
ATTENDANCE
WINNER!**



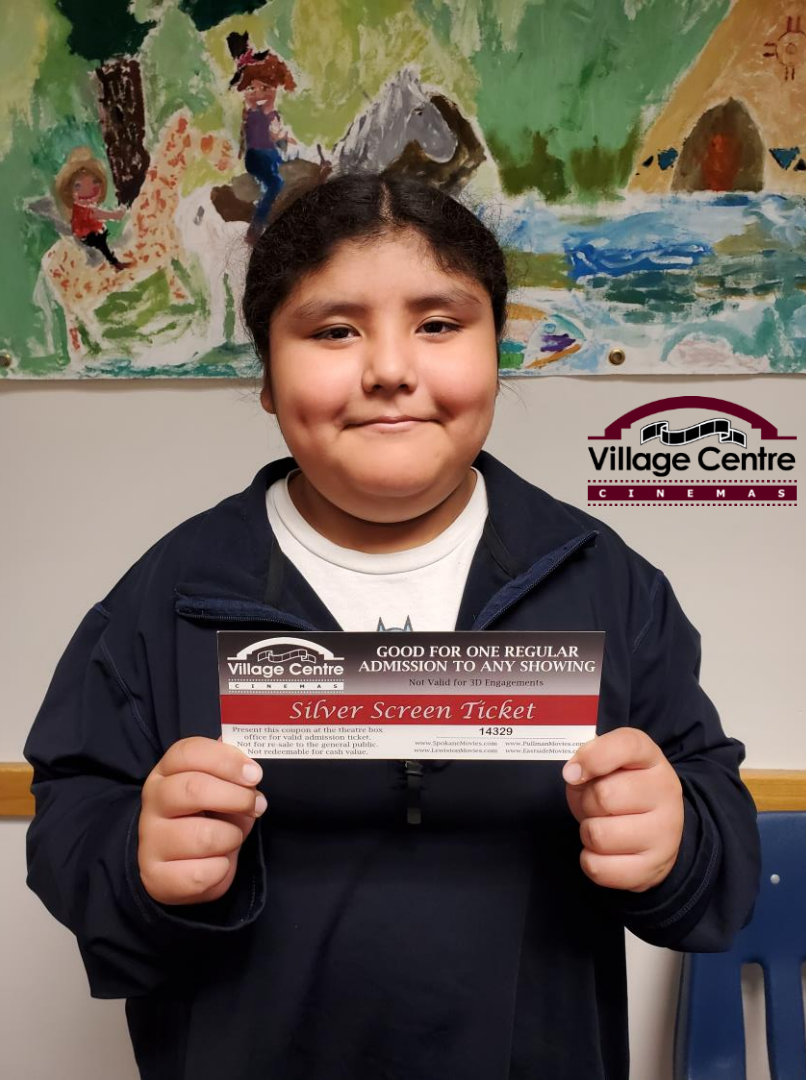
**CONGRATULATIONS!
CAIRI WILLIAMS
1ST GRADE**



**PERFECT
ATTENDANCE
WINNER!**



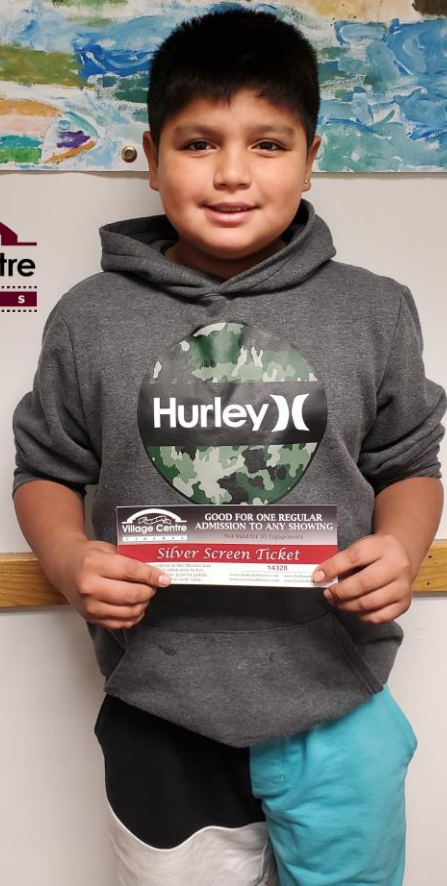
**CONGRATULATIONS!
SILOUETTE CROWE
2ND GRADE**



PERFECT ATTENDANCE WINNER!



CONGRATULATIONS! AMRBOSE SISTO III 3RD GRADE



**PERFECT
ATTENDANCE
WINNER!**



**CONGRATULATIONS!
JALON GREENE
4TH GRADE**



**PERFECT
ATTENDANCE
WINNER!**



**CONGRATULATIONS!
TYANNE HILLMAN
5TH GRADE**



**PERFECT
ATTENDANCE
WINNER!**



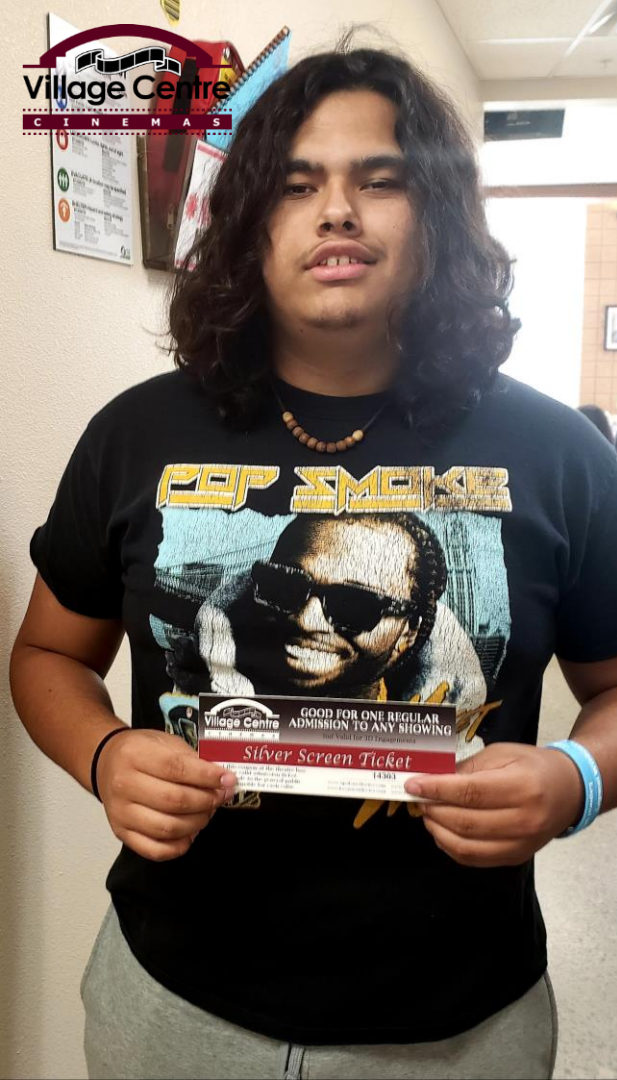
**CONGRATULATIONS!
AIDEN PIELSTICK
7TH GRADE**



**PERFECT
ATTENDANCE
WINNER!**



**CONGRATULATIONS!
JULIAN MCCONVILLE
10TH GRADE**



**PERFECT
ATTENDANCE
WINNER!**



**CONGRATULATIONS!
MATHIAS FOX
11TH GRADE**

Qe'ciyew'yew' Lapwai School District Bus Drivers!



Lapwai Elementary Wildcat Scholars participated in a bus expectations rodeo. Staff modeled respectful, responsible, and safe behavior expectations on the bus.



Nez Perce Cultural Principle:
Teachers Are Guides

Qe'ciyew'yew' Nez Perce Tribal Police!



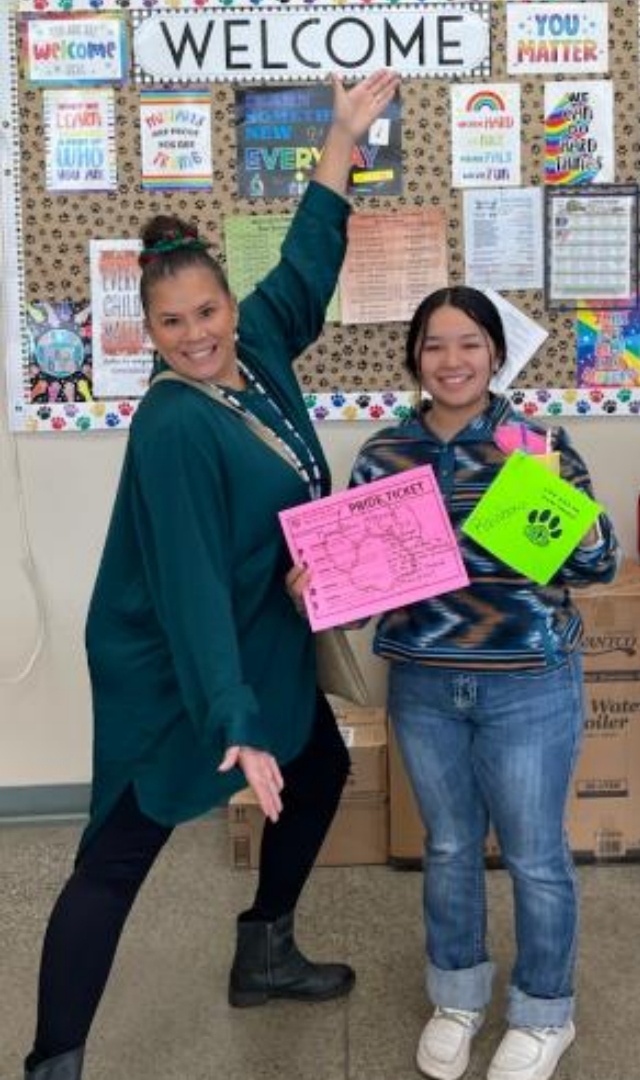
Thank you for joining Lapwai Middle-High School during safety drill practices this week!

Qe'ciyew'yew' Mrs. Williams!



Nez Perce Cultural Principle:
Experiential Learning

*Lapwai Middle-High School
Native Arts Class
Beading Keychains*



Lapwai Middle-High School Students Recognized for Emulating the Wildcat Way! P.R.I.D.E. Tickets

Participation
Respect
Integrity
Dedication
Excellence

Rainbow Henry
12th Grade

Nez Perce Cultural Principle:
Interpersonal Relationships



Lapwai Middle-High School Empowerment Assembly

Nez Perce Cultural Principle:
Community Orientation



Qe'ciyew'yew' Ryan Oatman & the
Nez Perce Tribe Executive Committee

Qe'ciyew'yew' Lapwai School District
Indian Education Department