

Lapwai School District Superintendent's Weekly Update



Friday, November 11, 2022

*Celebrations and Pictures of Wildcat Scholars
and the Dedicated Staff Who Serve Them*

National School Psychology Week



Lori Ravet
Special Education Director
School Psychologist

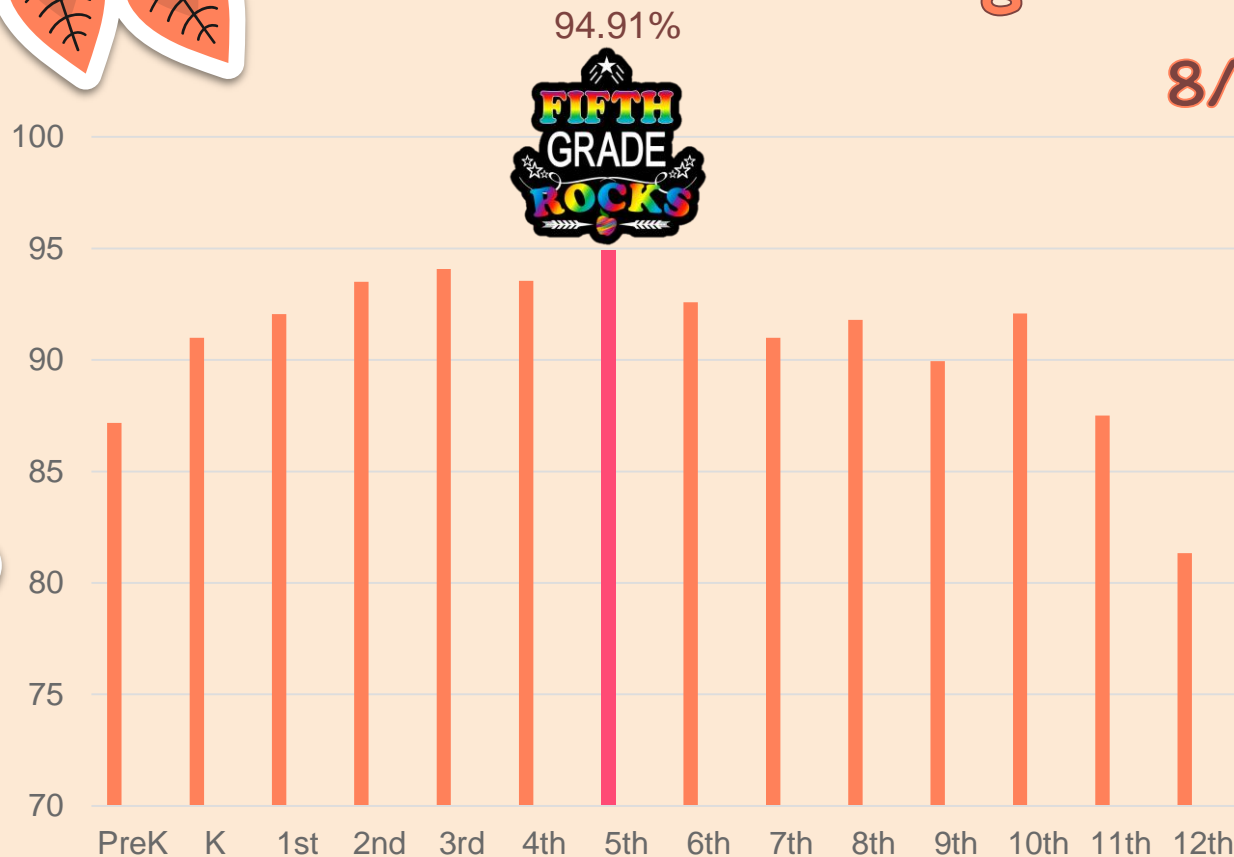
On behalf of the students, staff, and board of trustees of the Lapwai School District, please join us in celebrating these dedicated professionals with incredible hearts for our kids! It is rare for a rural school district to have one school psychologist, and we've been blessed with two of the very best! Qe'ciyew'yew' for all you do to support student success!



Kristen Bateman
Elementary School Counselor
School Psychologist

Average Daily Attendance

8/30/22 to 11/2/22



5th Grade had the highest average daily attendance during the contest period. They win a field trip to the Palouse Discovery Science Center!





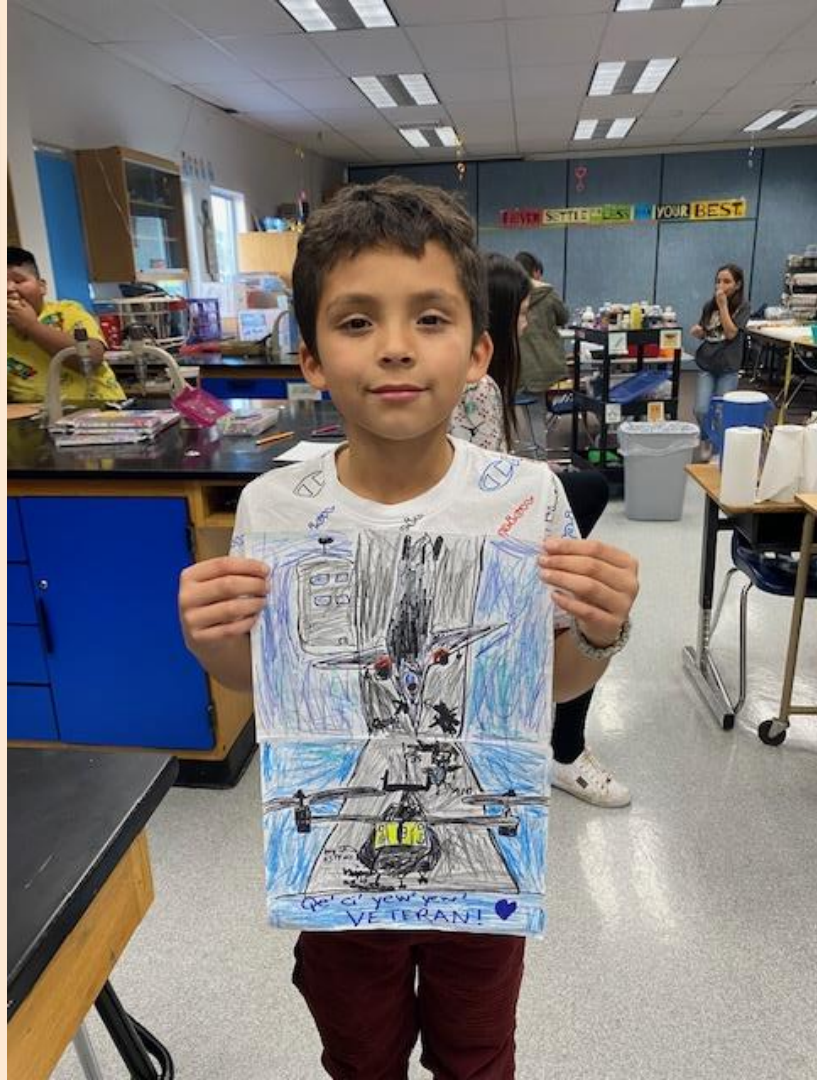
Nez Perce Cultural Principle:
Experiential Learning



ARTIST SPOTLIGHT



Blue Sky Gomez Veterans Day Artwork





2nd Grade Welcoming Fall



PERFECT ATTENDANCE WINNER



ANTHONY DICK KINDERGARTEN



PERFECT ATTENDANCE WINNER



KAYLEE MCFARLAND
2ND GRADE



**PERFECT
ATTENDANCE
WINNER**



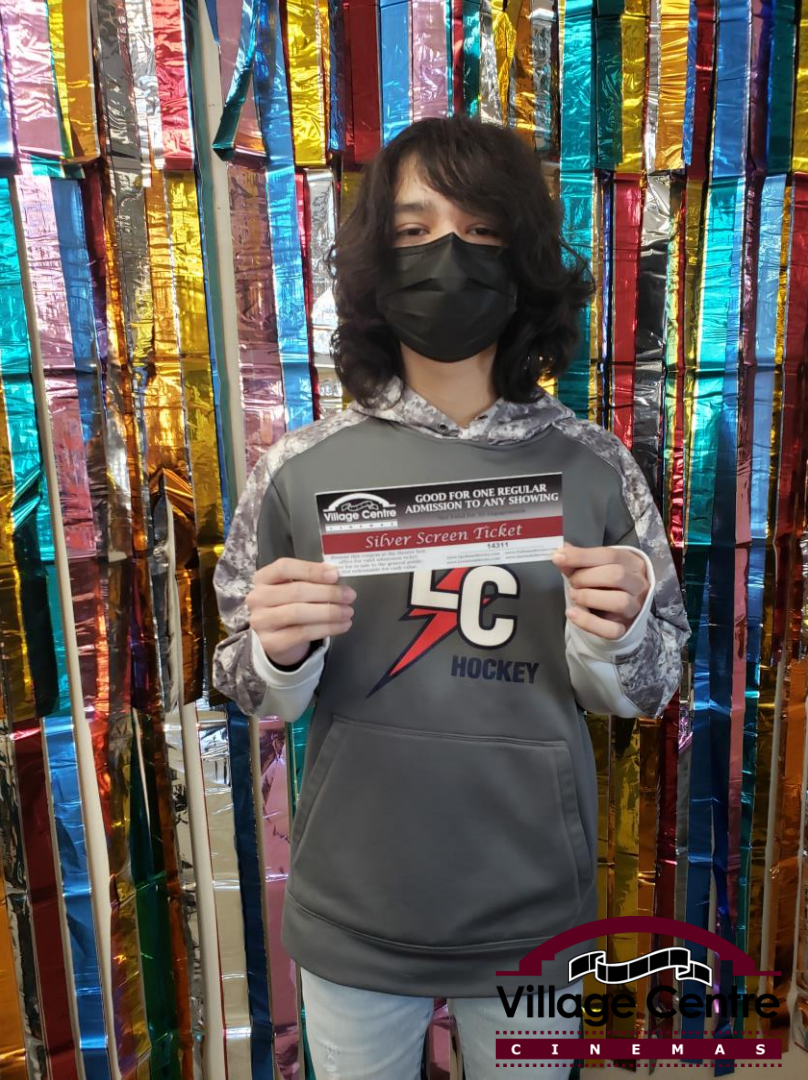
**ODIN HENRY
4TH GRADE**



PERFECT ATTENDANCE WINNER



LILY STUK
6TH GRADE



PERFECT ATTENDANCE WINNER



ADAM HENRY 8TH GRADE



PERFECT ATTENDANCE WINNER



JUSTIN RICKMAN
12TH GRADE

Alliance Title Teacher of the Month

Mrs. Arthur

Mrs. Arthur's Nomination:

"Mrs. Arthur is a high leverage teacher and role model. She exemplifies best practice teaching in her classroom. Her students know how to behave appropriately and respectfully across school environments. She champions student academic growth and promotes their healthy social and emotional development. Teeiah incorporates cultural elements in her classroom. As a union leader, building representative and negotiator she has improved the work climate and compensation for the employees of Lapwai School District #341. Teeiah is a member of an organization that promotes a high degree of teaching excellence and professionalism outside of the school."



DailyFLY

- ✓ Mental Health Resources
- ✓ Guides for School Success
- ✓ Literacy & Mathematics Resources

A State Tribal Education Partnership &
Lapwai School District Family
Engagement Teams
Action Plan

Lapwai.org
Parent
Portal



www.Lapwai.org
Impact Aid



In an effort to hear the voices of our parents, community members and Nez Perce Tribal leaders in the planning and development of our educational programs and activities, the following survey was created. The survey is available in two formats.

